

# 'UAE Dubai Internation School - Furniture Plan'



# Main Lobby--Public Reception



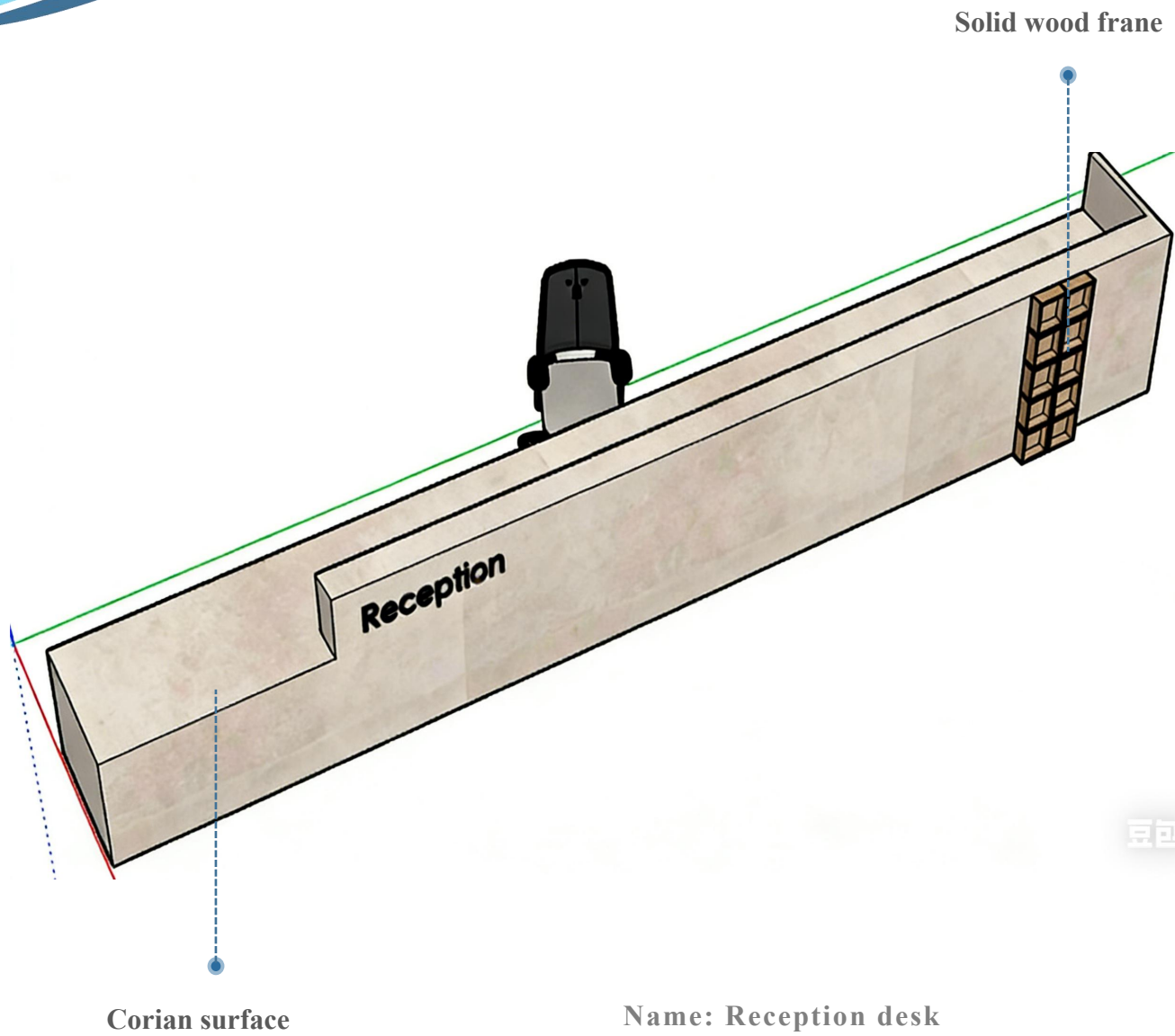
# Main Lobby-- Reception Desk

## Design Notes:

Reception Desk - With Upfront  
And One Panelling Detail On  
Front Fascia



Name: Reception chair

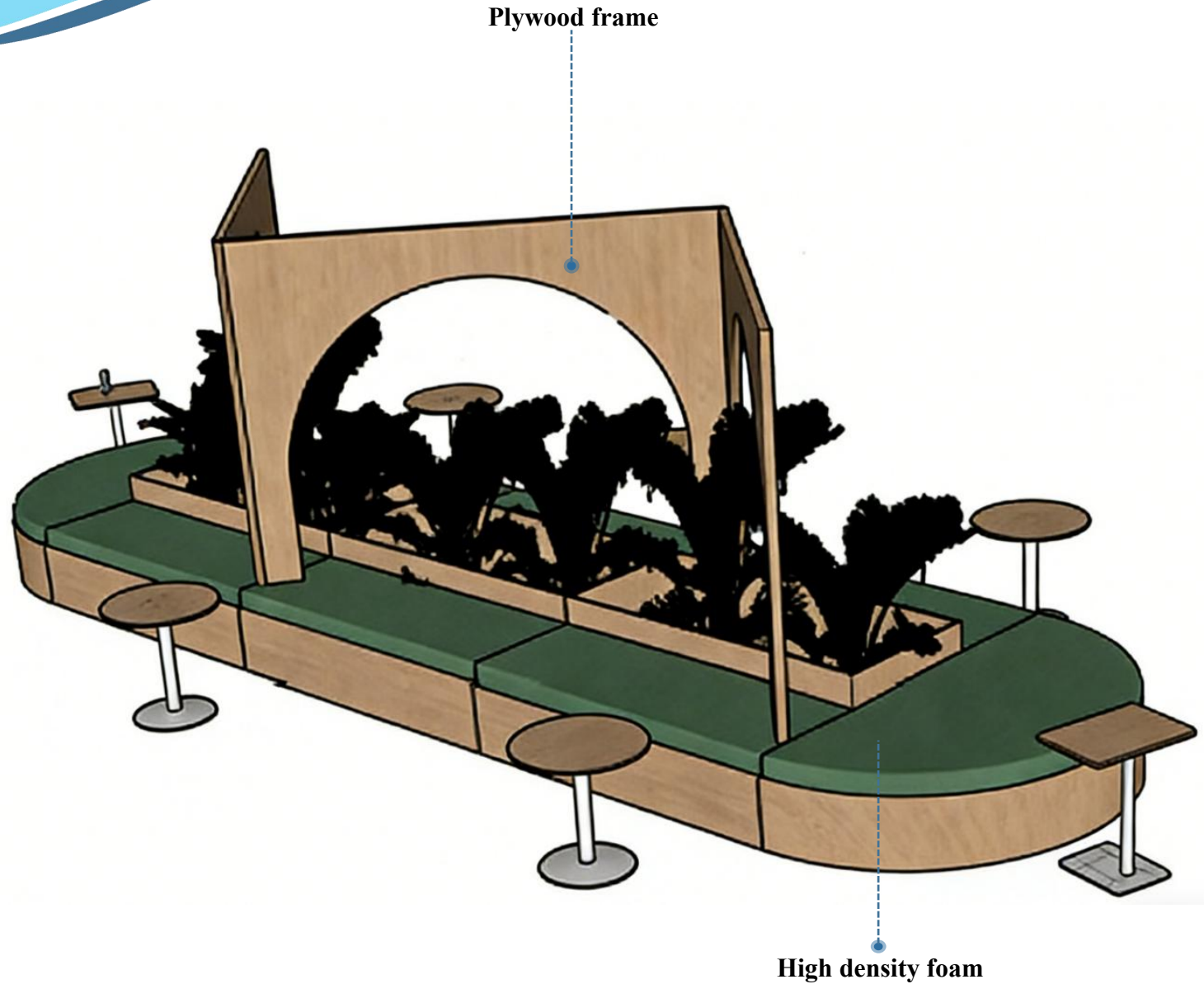


豆包AI生成

# Main Lobby-- Customize Bench

## Design Notes:

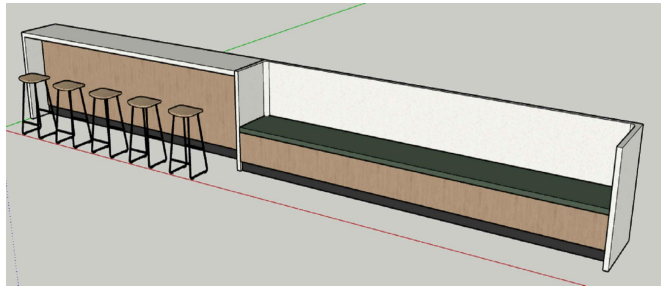
**Seating - Customized Bench  
With Upholstered Seating And  
Planter Box On Center Along  
With Vertical Full Height  
Design Panels**



# Family Lounge-High table

## Design Notes:

Custom Made High Table With Corian On Top And Both Side Fascia Along With Upholstered Seating.



# Principal Office

## Design Notes:

Principal's Desk with storage comfort with professionalism, it features a balanced layout that promotes focus and decision-making. Natural light and calming colors create a conducive atmosphere for strategic planning and confidential discussions.



Principal's office

The principal's office is a blend of leadership and calm. Designed to create comfort with professionalism, it features a balanced layout that promotes focus and decision-making. Natural light and calming colors create a conducive atmosphere for strategic planning and confidential discussions.



Principal's office

Principal's Desk with storage



# Meeting Room View

## Design Notes:

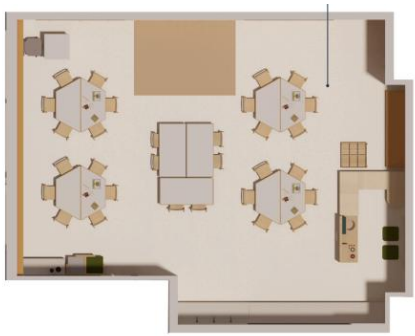
Storage in our meeting room is designed to seamlessly integrate functionality with aesthetics. We understand the importance of keeping the space organized while maintaining a professional atmosphere conducive to productive discussions.



# KG Classroom View

## Design Notes:

The classroom is zoned into roleplay, art, and academic zones. Roleplay sparks imagination, art fosters creativity, and academics offer focused learning. Each zone supports diverse learning styles, creating a dynamic environment for holistic growth.



# KG Breakout and Library View

## **Zoned Learning:**

The breakout is zoned into roleplay, art, and academic zones. Roleplay sparks imagination, art fosters creativity, and academics offer focused learning. Each zone supports diverse learning styles, creating a dynamic environment for holistic growth.



## **Designing for Learning:**

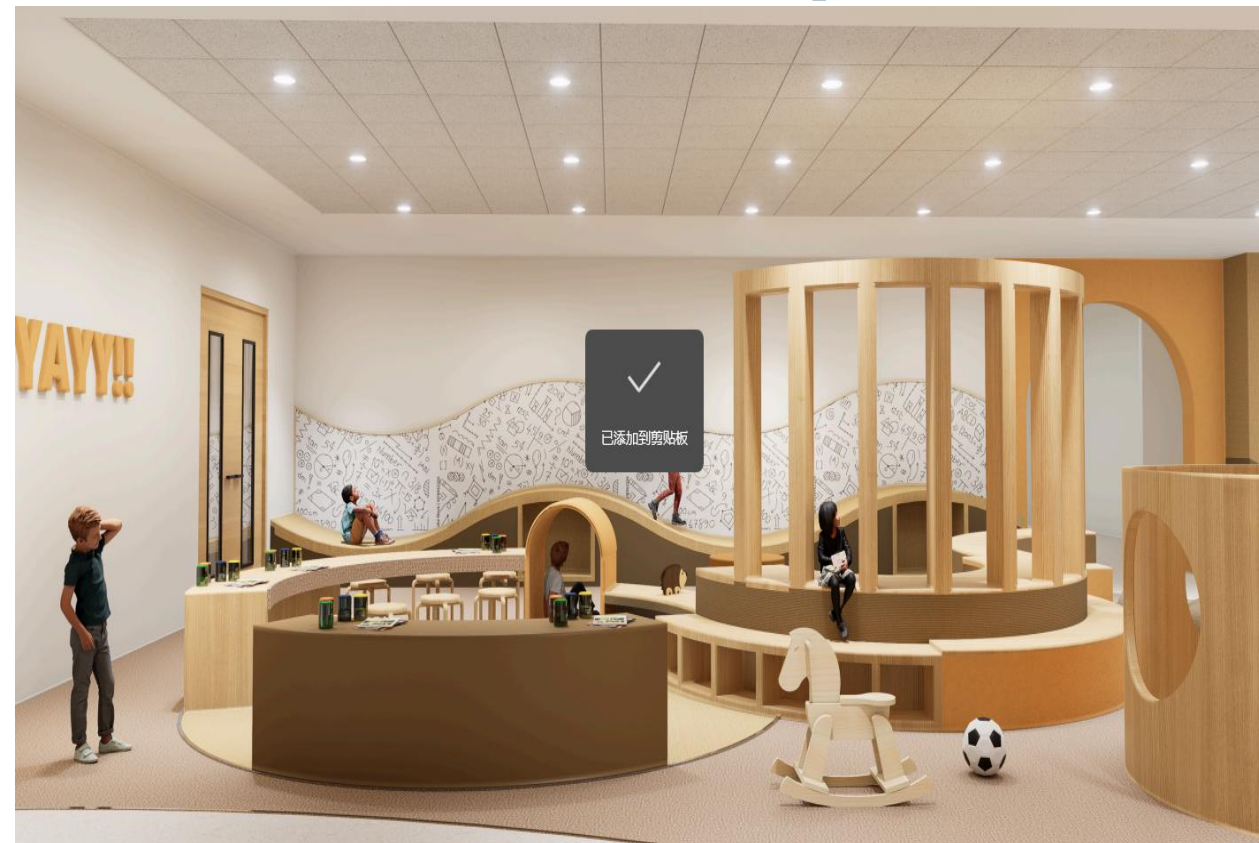
Tables and chairs are both sturdy and lightweight, with rounded edges for safety. Soft cushion seating and poufs offer cozy areas for collaborative learning and reading corners. Vibrant colors add a playful touch to the space, creating an inviting atmosphere that encourages exploration and creativity among young learners.



## **KG Breakout and Library:**

In the KG Breakout and library, the interior design emphasizes functionality and comfort. Tables and chairs are both sturdy and lightweight, with rounded edges for safety. Soft cushion seating and poufs offer cozy areas for collaborative learning and reading corners. Vibrant colors add a playful touch to the space, creating an inviting atmosphere that encourages exploration and creativity among young learners.

## KG Breakout and Library



### Design Notes:

The breakout is zoned into roleplay, art, and academic zones. Roleplay sparks imagination, art fosters creativity, and academics offer focused learning. Each zone supports diverse learning styles, creating a dynamic environment for holistic growth.



**Soft Play-Foam EY:**



**High Bridge:**



## Design Notes:

The breakout is zoned into soft seating, art, and academic zones. Roleplay sparks imagination, art fosters creativity, and academics offer focused learning. Each zone supports diverse learning styles, creating a dynamic environment for holistic growth



# Primary Breakout View

**Zoned Learning:**

The breakout is zoned into soft seating, art, and academic zones. Roleplay sparks imagination, art fosters creativity, and academics offer focused learning. Each zone supports diverse learning styles, creating a dynamic environment for holistic growth



**Designing for Learning:**

Tables and chairs are both sturdy and lightweight, with rounded edges for safety. Soft cushion seating and poufs offer cozy areas for collaborative learning and reading corners. Vibrant colors add a playful touch to the space, creating an inviting atmosphere that encourages exploration and creativity among young learners.



**Primary Breakout:**

In the primary breakout, the interior design emphasizes functionality and comfort. Tables and chairs are both sturdy and lightweight, with rounded edges for safety. Soft cushion seating and poufs offer cozy areas for collaborative learning and reading corners. Vibrant colors add a playful touch to the space, creating an inviting atmosphere that encourages exploration and creativity among young learners.

# Secondary Classroom View

## Design Notes:

The breakout is zoned into soft seating, art, and academic zones. Roleplay sparks imagination, art fosters creativity, and academics offer focused learning. Each zone supports diverse learning styles, creating a dynamic environment for holistic growth



# Secondary Breakout View



### Design Notes:

Tables and chairs are both sturdy and lightweight, with rounded edges for safety. Soft cushion seating and poufs offer cozy areas for collaborative learning and reading corners. Vibrant colors add a playful touch to the space, creating an inviting atmosphere that encourages exploration and creativity among young learners.



# Primary Canteen View

## **Proposed Kitchen:**

Kitchen is meticulously designed to optimize functionality, efficiency, and safety. It will enable our kitchen staff to prepare a diverse range of fresh, healthy meals onsite, enhancing the quality and variety of our food offerings.

## **Outdoor Seating:**

Outdoor seating area is thoughtfully integrated into the school environment, providing a tranquil retreat for students to unwind and socialize. Featuring comfortable seating, shaded areas, and natural surroundings, it encourages a connection with the outdoors while enjoying meals or snacks.



## **Tiered Seating:**

The tiered seating in our canteen is strategically designed to optimize space and create distinct dining zones. Each tier provides a unique vantage point, whether students prefer a cozy corner for quiet meals or a central spot for lively conversations with friends.

## **Flexible Seating:**

Our canteen features flexible seating options with movable tables and chairs, allowing students to create their ideal dining setup. Whether it's rearranging for group discussions, organizing study sessions, or enjoying a meal alone, our adaptable furniture ensures comfort and convenience for every occasion.

## **Secondary Canteen:**

The design of our canteen embodies a harmonious blend of functionality and aesthetics, aiming to create a welcoming atmosphere that encourages relaxation and social interaction. Bright, airy spaces are complemented by cheerful colors and comfortable seating, ensuring that students feel at ease during their dining experience.

# Secondary Canteen View

## **Proposed Kitchen:**

Kitchen is meticulously designed to optimize functionality, efficiency, and safety. It will enable our kitchen staff to prepare a diverse range of fresh, healthy meals onsite, enhancing the quality and variety of our food offerings.

## **Outdoor Seating:**

Outdoor seating area is thoughtfully integrated into the school environment, providing a tranquil retreat for students to unwind and socialize. Featuring comfortable seating, shaded areas, and natural surroundings, it encourages a connection with the outdoors while enjoying meals or snacks.

## **Tiered Seating:**

The tiered seating in our canteen is strategically designed to optimize space and create distinct dining zones. Each tier provides a unique vantage point, whether students prefer a cozy corner for quiet meals or a central spot for lively conversations with friends.

## **Flexible Seating:**

Our canteen features flexible seating options with movable tables and chairs, allowing students to create their ideal dining setup. Whether it's rearranging for group discussions, organizing study sessions, or enjoying a meal alone, our adaptable furniture ensures comfort and convenience for every occasion.



## **Secondary Canteen:**

The design of our canteen embodies a harmonious blend of functionality and aesthetics, aiming to create a welcoming atmosphere that encourages relaxation and social interaction. Bright, airy spaces are complemented by cheerful colors and comfortable seating, ensuring that students feel at ease during their dining experience.

# Primary Library View

## **Integration with Corridors :**

Corridors are no longer mere passageways; they are now extensions of our library's expansive atmosphere. Bright, open spaces are enhanced with natural light and ergonomic furniture, creating an inviting ambiance that encourages students to engage with books and ideas as they move through our school.



## **Island Reception :**

The Island Reception is designed to be a focal point, combining functionality with aesthetics. Its open design and strategic placement ensure easy navigation and visibility, allowing staff to greet and assist visitors promptly. The island layout promotes efficient circulation and enhances the overall flow of library operations.

## **Open library :**

Open Library concept breaks down traditional boundaries by utilizing corridors as open, inviting spaces for reading, discovery, and collaboration. By incorporating shelves, seating areas, and interactive displays along corridors, we transform transitional spaces into hubs of learning and creativity.

## **Primary Library:**

The design of our Primary Library is crafted to inspire curiosity and foster a sense of wonder among our youngest learners. Bright colors, cozy reading nooks, and interactive spaces create an inviting environment where children feel encouraged to explore and engage with books. The layout is thoughtfully planned to accommodate various activities and learning styles. Zones dedicated to storytelling corners, quiet reading areas, and collaborative spaces ensure that every child can find their preferred spot to dive into the magic of literature.

# Secondary Library View

## **Integration with Corridors :**

Corridors are no longer mere passageways; they are now extensions of our library's expansive atmosphere. Bright, open spaces are enhanced with natural light and ergonomic furniture, creating an inviting ambiance that encourages students to engage with books and ideas as they move through our school.



## **Island Reception :**

The Island Reception is designed to be a focal point, combining functionality with aesthetics. Its open design and strategic placement ensure easy navigation and visibility, allowing staff to greet and assist visitors promptly. The island layout promotes efficient circulation and enhances the overall flow of library operations.

## **Open library :**

Open Library concept breaks down traditional boundaries by utilizing corridors as open, inviting spaces for reading, discovery, and collaboration. By incorporating shelves, seating areas, and interactive displays along corridors, we transform transitional spaces into hubs of learning and creativity.

## **Secondary Library:**

The design of our Primary Library is crafted to inspire curiosity and foster a sense of wonder among our youngest learners. Bright colors, cozy reading nooks, and interactive spaces create an inviting environment where children feel encouraged to explore and engage with books. The layout is thoughtfully planned to accommodate various activities and learning styles. Zones dedicated to storytelling corners, quiet reading areas, and collaborative spaces ensure that every child can find their preferred spot to dive into the magic of literature.

# Art Room View

## Design Notes:

The layout emphasizes flexibility, with movable Art room Display units, Storage for Students, furniture and adjustable lighting to accommodate various artistic activities and preferences.



# ICT Lab View



## ICT LAB:

The design of Our ICT (Information and Communications Technology) lab is a dynamic space designed to foster innovation and collaboration. Equipped with state-of-the-art technology, it serves as a hub where students can explore digital creativity, conduct research, and develop essential technical skills. From programming and multimedia production to data analysis and virtual simulations, our ICT lab empowers learners to excel in the digital age.

# DT Lab View

## Design Notes:

The design of Our DT (Information and Communications Technology) lab is a dynamic space designed to foster innovation and collaboration. Equipped with state-of-the-art technology, it serves as a hub where students can explore digitalcreativity, conduct research, and develop essential technical skills. From programming and multimedia production to data analysis and virtual simulations, our ICT lab empowers learners to excel in the digital age.



# Auditorium View

